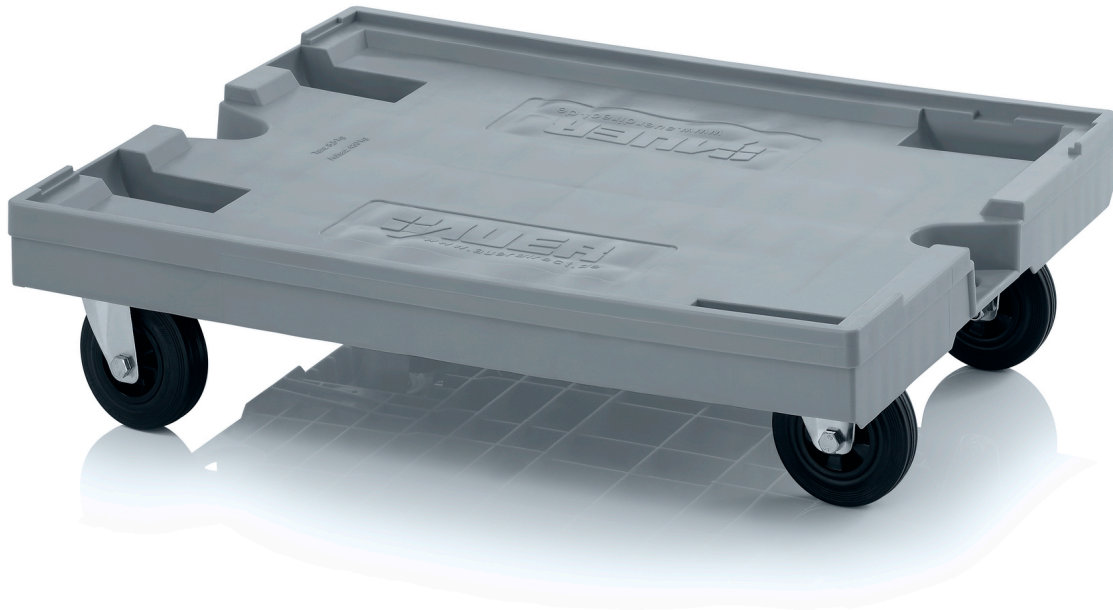


## MAXI TRANSPORT TROLLEY WITH RUBBER WHEELS RO 86 GU BO



### The large stackable version

The basic dimensions of AUER Packaging's Maxi transport trolley are 80 x 60 cm, which makes it ideal for transporting either a single large plastic container or several small ones. When not in use, the trolleys can be safely stacked on top of each other in order to save space thanks to recesses on the top of them.

- High-quality, smooth-running wheels
- Available in various designs
- Very stable, 250 kg load-bearing capacity
- Matched to Euro dimensions

### DETAILS

<b>Outer dimensions L x W</b>	82 x 62 cm	<b>Weight</b>	8.86 kg
<b>Design Castors</b>	2 steering castors, 2 fixed castors	<b>Ø Castors</b>	12.5 cm
<b>Material Castors</b>	Rubber	<b>Colour</b>	silver grey similar RAL 7001